

CPS 5242/6 - Context Map

115°48'0"E

115°57'0"E

116°6'0"E

31°48'0"S

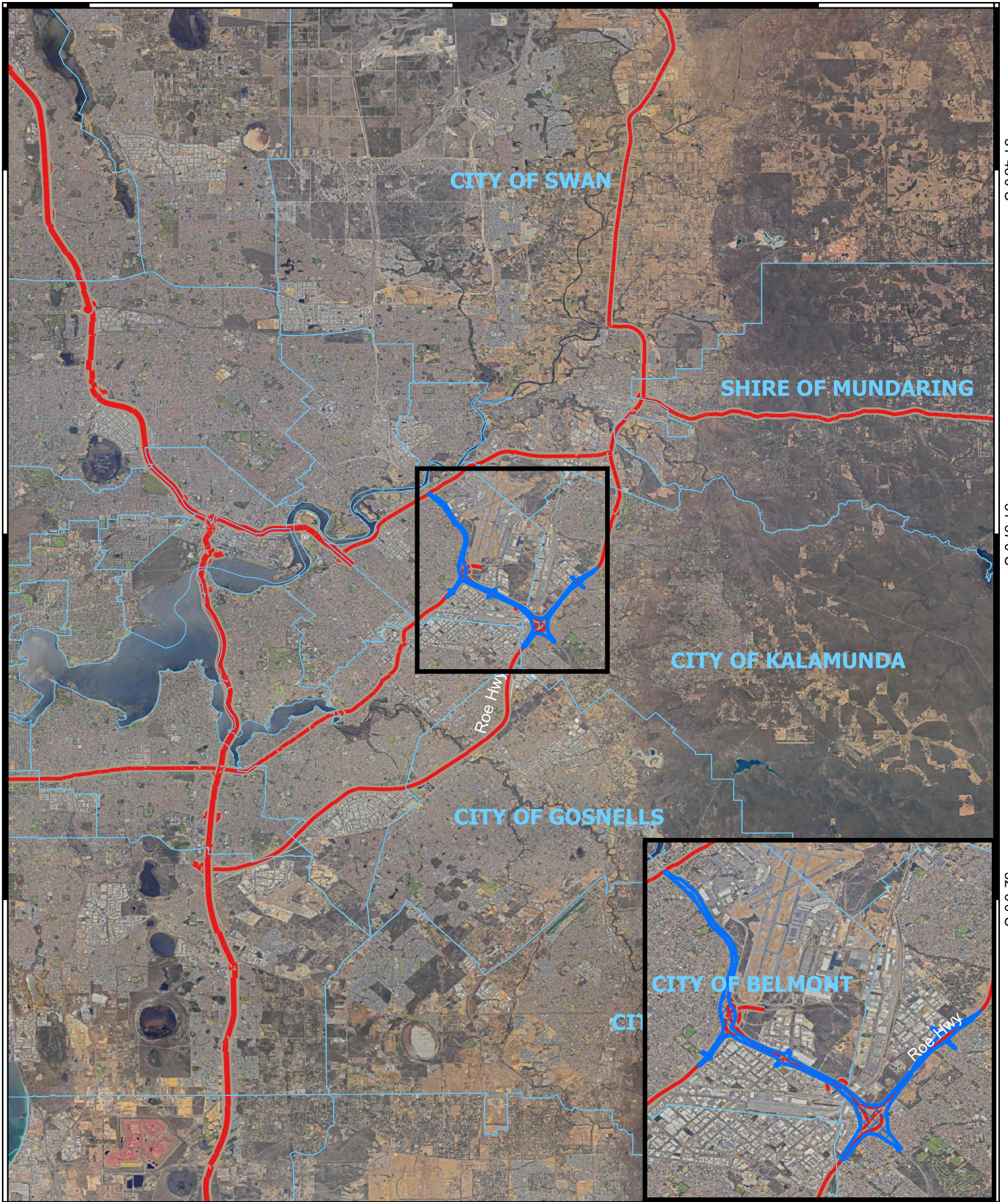
31°48'0"S

31°57'0"S

31°57'0"S

32°6'0"S

32°6'0"S





115°48'0"E



115°57'0"E

116°6'0"E

Legend

-  CPS areas applied to clear
-  Local Government Authorities

Roads

-  Freeway
-  National Highway



0 2 4 6 8 10 km



1:150,000

Projection: GDA2020



GOVERNMENT OF WESTERN AUSTRALIA